

C3 ROOFTOP RIDER TÉCNICO

P.A.

4 UPA-2P MEYER SOUND

4 SUB B52 LX-18V3

DIGITAL PROCESSOR DBX DRIVERACK PA2

CONFIGURATION

LEFT: 2X UPA-2P MEYER SOUND

RIGHT: 2X UPA-2P MEYER SOUND

SUBS: 4X B52 LX-18V3 STAGE CENTER

INPUT: LEFT & RIGHT. SUBS COMES WITH SYSTEM ARRANGEMENT

NOT REMOVABLE

FRONT OF HOUSE

YAMAHA LS9 32 INPUTS, 16 OUTPUTS

ANALOG SNAKE PROEL 32 INPUTS & 8 RETURNS

MONITORS

WEDGES: 02 EV ZLX-12

01 DAS M12A

MICROPHONES

03 SHURE SM58

04 SM57

03 PG 56

01 PG 52

DI BOX

02 DI STEREO WHIRLWIND

02 SAMSON MONO PASSIVE



C3 ROOFTOP RIDER TÉCNICO

MICROPHONE STANDS

06 BOOM STANDS

04 MINI BOOM STANDS

CABLES

30 XLR

STAGE MEASUREMENTS

4.80MTS X 3.60MTS

PERFORMANCE & LIGHTNING

SCREEN LED 3MTS X 2MTS, 4M. (PIXELES 768X512) NOVASTAR VX2S
PROCESSOR

04 STEELPRO BEAM 60H

06 STEELPRO OM-18RM PARLED

02 STEELPRO BEAM 2R

02 STEELPRO 18X15 PARLED

01 PC SUNSTAR 1024 PRO INTERFACE.

WIRELESS MICROPHONE

02 SHURE GLXD4 SM58 (RENT ONLY)

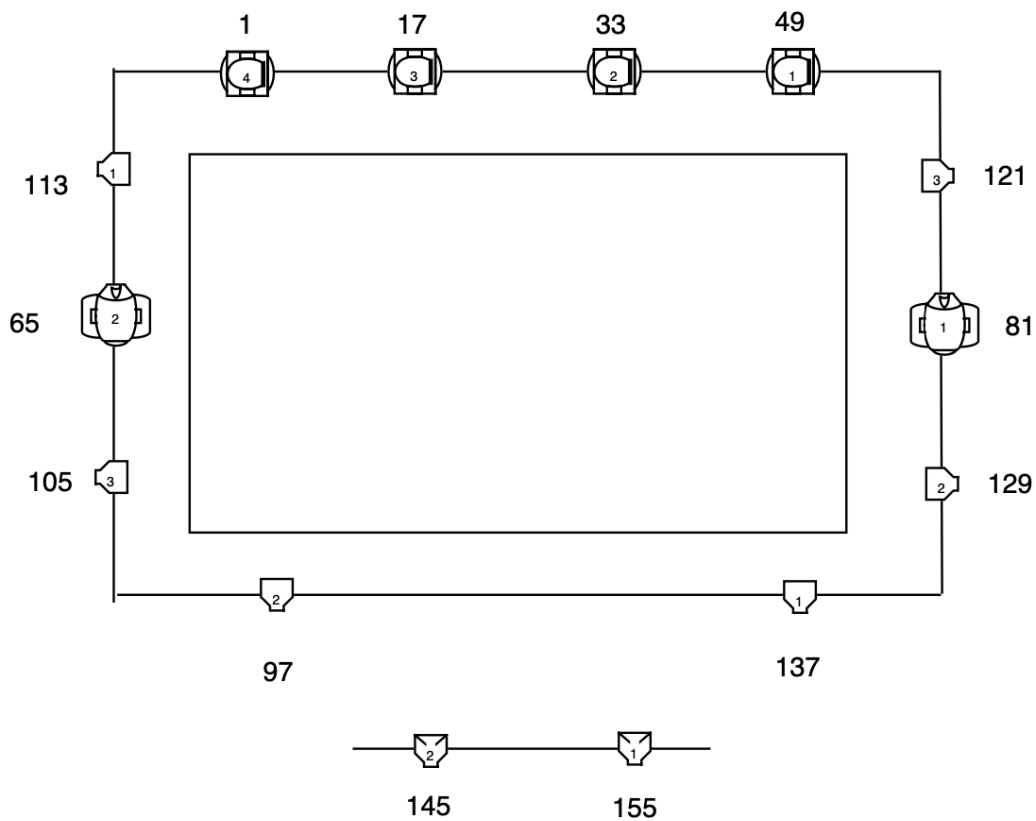






/C3 STAGE

WWW.C3STAGE.COM

AV. VALLARTA 1488
CASI ESQUINA CHAPULTEPEC

C3 ROOFTOP RIDER TÉCNICO



-  PAR STEEL PRO (6) 8CH
-  PARLED STEEL PRO (2) 10CH
-  BEAM 60H STEEL PRO (4) 8CH
-  BEAM 2R STEEL PRO (2) 14CH